

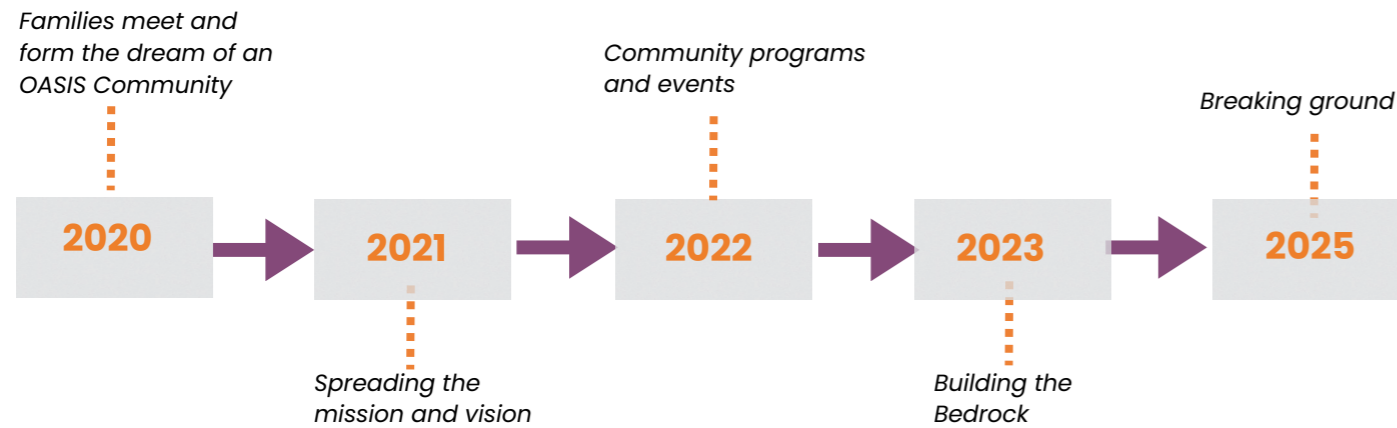
THE BEDROCK CAMPAIGN

Your support is needed to continue this dream of creating the OASIS Community. A neighborhood where residents will enjoy the benefits of independent living in a safe, accessible, inclusive and person-centered environment. Friendships and social engagement will replace isolation and loneliness.

Every community begins with the bedrock. Bedrock is the stable foundation desired for any building project. If you have bedrock, you have found a good place to start. OASIS Community is looking for bedrock upon which to build.

We need you to become a Bedrock member of the OASIS Community by making a pledge of \$10,000 which can be given in a lump sum or installments.

Your support will move the dream forward by helping us acquire land – the Bedrock upon which we will build the OASIS Community.



OASIS
COMMUNITY =

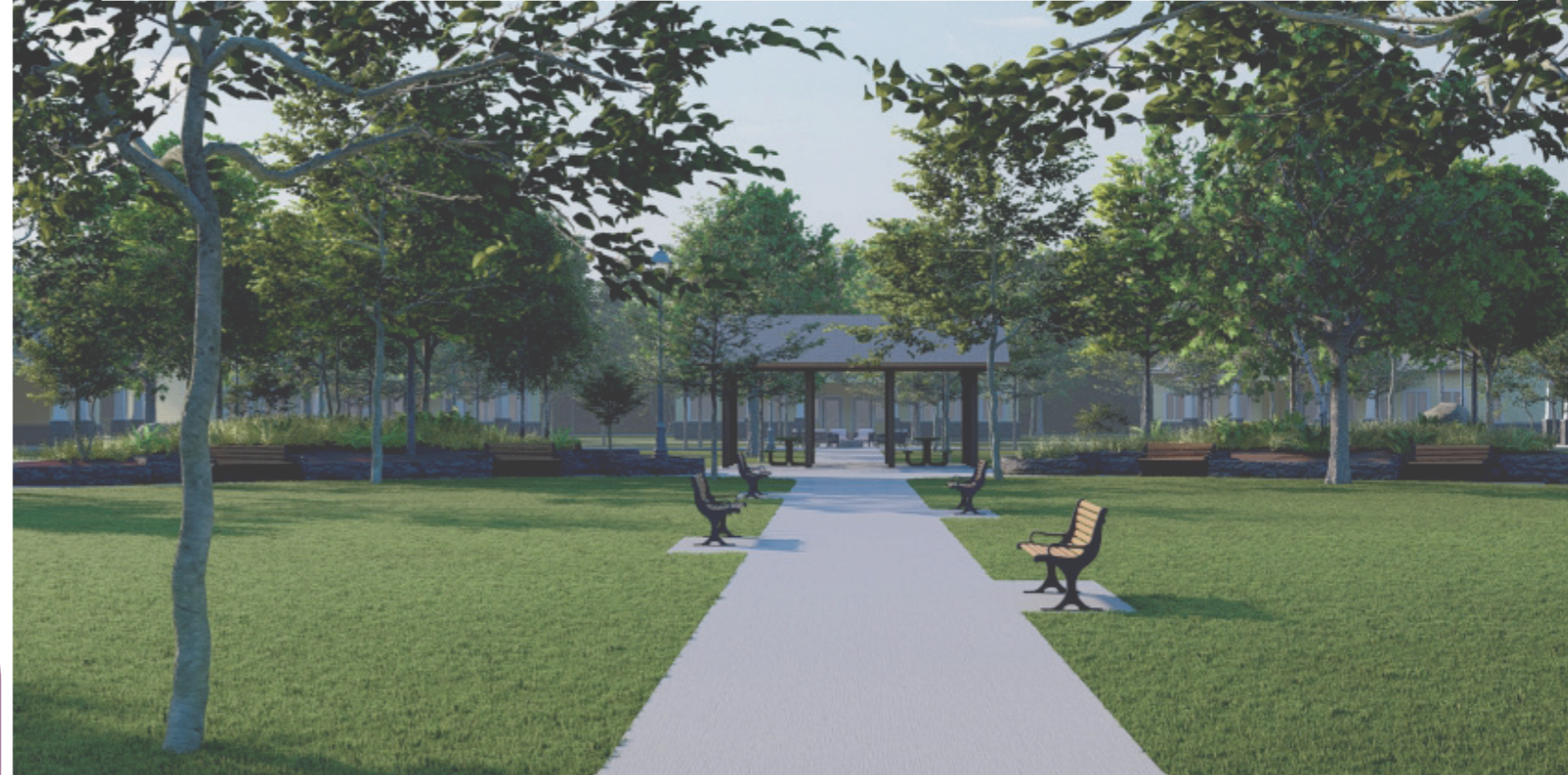
20 acres (The Bedrock) - \$500,000
 Infrastructure & Site Prep - \$3,200,000
 Enrichment Center - \$2,000,000
 Landscape & accessibility - \$2,000,000
 Total investment - \$7,700,000

Board Members

Rob Eyman, President
 Tom Humphrey, Treasurer
 Kathy Trinkle, Secretary

Don Gentry
 Jennifer Hoover
 Rhonda Jones

Stephen Snyder
 Wendy Starr
 John M. Stuckey



OASIS Community is on a mission to create and maintain an inclusive, person-centered living community for individuals with intellectual or developmental disabilities (IDD) and families who care for a person with IDD.

A community that is welcoming. A community that is safe. A community that is accessible. A community where people of all generations and abilities can live as neighbors. A community where friendships and social engagement will replace isolation and loneliness.

These fundamental principles serve as the bedrock of the OASIS Community - the foundation from which we will build. Bedrock is the stable foundation desired for any building project. If you have bedrock, you have found a good place to start.

Join us in finding our bedrock – a place that ideally meets all our land acquisition requirements.

OASISFORLIFE.ORG

OASIS COMMUNITY IS A 501(C)(3) ORGANIZATION

OASISFORLIFE.ORG

THE PROBLEM TO SOLVE

Our story begins in 2020 with three families contemplating the future for their sons. A causal conversation quickly became a friendship that turned into a mutual desire to provide a vibrant community for all people with intellectual or developmental disabilities (IDD).

They shared the same questions:

- 1** What will life be like for our sons with IDD when we are no longer here?"
- 2** "Where will they live?"
- 3** How can we help them achieve a stable and fulfilling quality of life?

While exploring their options, they met other parents with same questions.

There are more than 45,000 adults with IDD in Indiana.

- **Over 50%** of adults with IDD remain in their family home due to the extreme shortages in living and social options.
- Those who remain in the family home do not qualify for Community Integration and Habilitation (CIH) waivers until the caregiver is **over the age of 80.**

Members of the IDD community have few residential options: they may continue to live in the family home with aging caregivers, reside in assisted living housing or pair with a small number of individuals and live in group homes scattered within residential communities.

While these options focus on meeting safety needs, they often do not address the higher needs of the IDD population. Research and lived experience suggest that the lack of social opportunities can lead to the isolation of individuals who want nothing more than to have friends and to live within an active community, just like anyone would.

IT IS UP TO US TO BUILD THAT COMMUNITY.

THE OASIS COMMUNITY

OASIS Community will be an intentional community that is created and sustained by intentional effort. A community where people of all generations and abilities will be accepted, cared for, valued and enjoyed for who they are – neighbors.

OASIS Community will be a gated neighborhood of individual, privately owned homes and duplexes situated around shared community space. It will include walking paths, green space and an accessible playground for children and adults. An Enrichment Center will provide learning and social opportunities.

Each home will be fully ADA compliant, utilizing smart home technology. Residences will be equipped with adaptable kitchens and insulated against sound and vibration. Large porches will encourage social engagement.

It will be designed around people, not cars. Traffic will flow around the perimeter creating a safe, pedestrian-friendly neighborhood.

As a neurodiverse neighborhood, OASIS Community will be a mix of neurodivergent and neurotypical residents who choose to live there as supportive intentional neighbors.



PROGRAMMING AND EVENTS

While working on the residential dream, OASIS Community believes that our Programs and Events are essential parts of our mission. They fill a need for adults with and without IDD to foster friendships, end isolation and loneliness, build awareness and promote health and wellness.

Follow OASIS Community on our website or Facebook page to stay informed about events and workshops as they are scheduled.